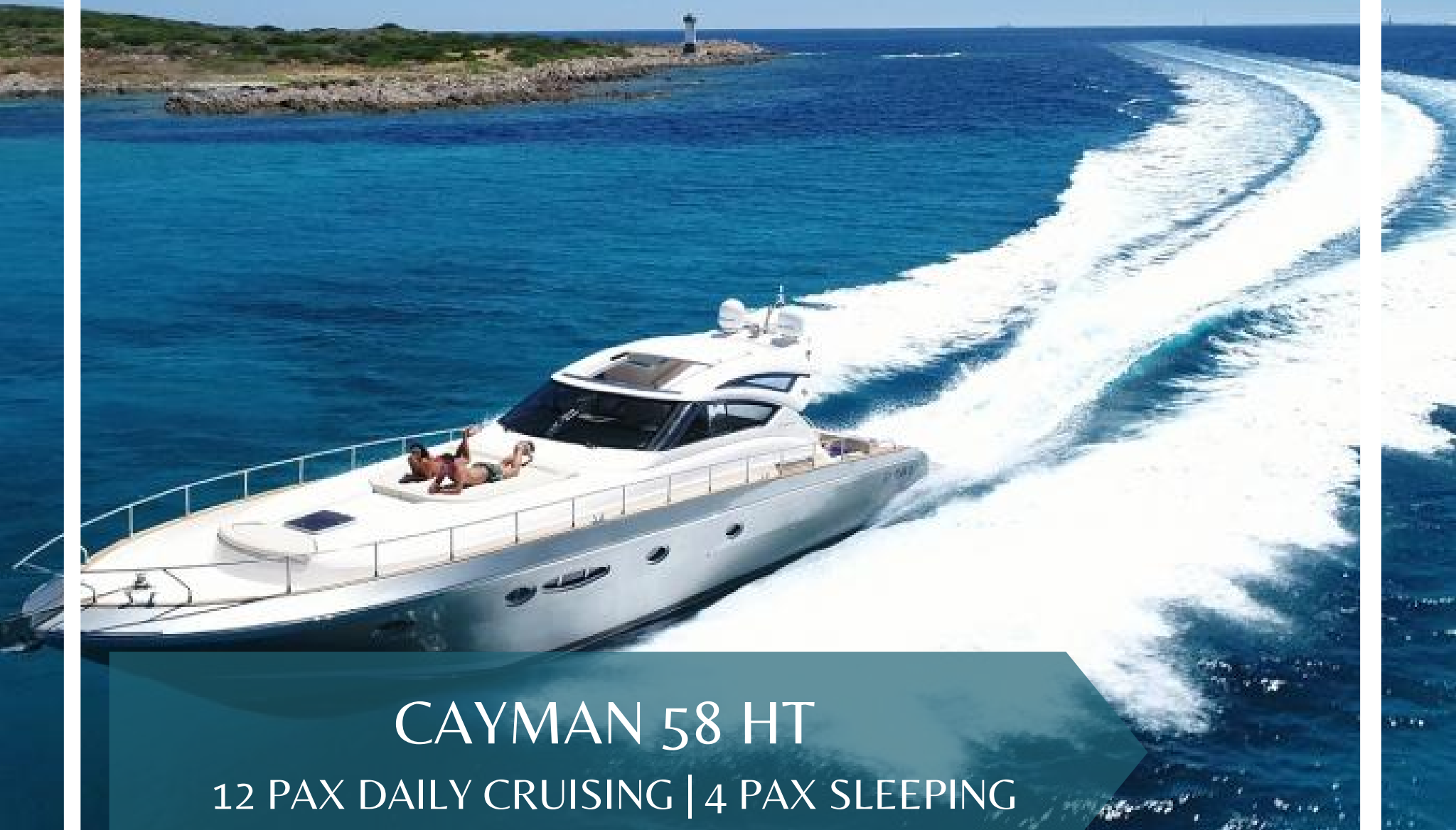


SARDINIA | COSTA SMERALDA | POLTU QUATU



CAYMAN 58 HT

12 PAX DAILY CRUISING | 4 PAX SLEEPING



CAYMAN 58 HT

FOR DAY/WEEK PRIVATE CHARTERS

HOMEPORT: Poltu Quatu

Type: Motor Yacht Open

Length: 18,50 meters

Max passenger capacity: 12 pax

Engine: MAN 2 x 800 Hp

ON-BOARD EQUIPMENT

1 master cabin + 1 private bathroom.

2 twin cabins + 1 private bathroom (Tot 6 Beds)

1 Captain's cabin in Stern

Dining and lounge areas.

Internal and External Kitchen, Fridge and freezer, MiniBar, Electric Hard Top, Air Condition.

Tender, Snorkeling Equipment.

WIFI, Stereo SS, 4x TV, Gangway



Included: VAT, 2 Crew, water+ soft drinks, Sardinian Aperitif snack.

Excluded: Fuel/Consumption ca 220l/hour, Extra Galley and extra expenses, Mooring in different Harbour, water toys, cost for overnight

CAYMAN 58 HT

